



Distributed in the Interest
of Product Development

VANDERBILT

Technical Data

Gas Chromatography

R.T. Vanderbilt Company, Inc.
30 Winfield Street, P.O. Box 5150, Norwalk, CT 06856-5150
Telephone: (203) 853-1400
Fax: (203) 853-1452, Web Site: www.rtvanderbilt.com

The information presented herein, while not guaranteed, was prepared by technical personnel and, to the best of our knowledge and belief, is true and accurate as of the date hereof. No warranty, representation or guarantee, express or implied, is made regarding accuracy, performance, stability, reliability or use. This information is not intended to be all-inclusive, because the manner and conditions of use, handling, storage and other factors may involve other or additional safety or performance considerations. The user is responsible for determining the suitability of any material for a specific purpose and for adopting such safety precautions as may be required. R. T. Vanderbilt Company does not warrant the results to be obtained in using any material, and disclaims all liability with respect to the use, handling or further processing of any such material. No suggestion for use is intended as, and nothing herein shall be construed as, a recommendation to infringe any existing patent or to violate any federal, state or local law or regulation.

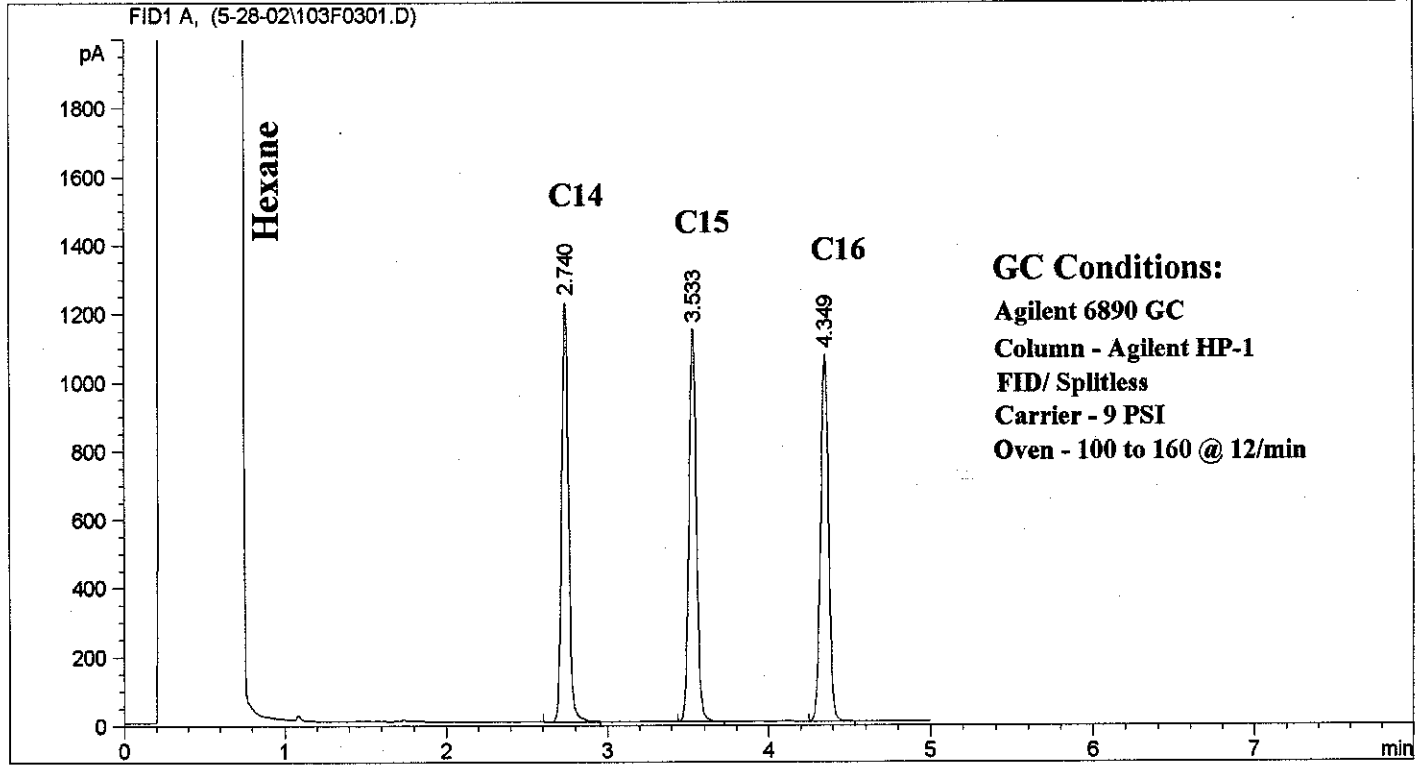
```

=====
Injection Date   : 5/28/2002 10:49:13 AM           Seq. Line   :    3
Sample Name     : FID Test-Mix                     Vial        :   103
Acq. Operator   : Maureen Grether                  Inj         :    1
                                                    Inj Volume  : 1 ul

Acq. Method     : C:\HPCHEM\1\METHODS\CALIB.M
Last changed    : 5/28/2002 10:51:19 AM by Maureen Grether
                  (modified after loading)
Analysis Method : C:\HPCHEM\1\METHODS\CALIB.M
Last changed    : 9/18/2002 9:47:18 AM by Anna Valko
                  (modified after loading)
=====

```

CALIBRATION



Area Percent Report

```

=====
Sorted By       :      Signal
Multiplier     :      1.0000
Dilution       :      1.0000
=====

```

Signal 1: FID1 A,

Peak #	RetTime [min]	Type	Width [min]	Area [pA*s]	Height [pA]	Area %
1	2.740	VB	0.0468	3648.98901	1224.52332	33.21373
2	3.533	BB	0.0494	3666.94702	1145.35925	33.37719
3	4.349	BB	0.0530	3670.45142	1069.85962	33.40908

Totals : 1.09864e4 3439.74219

Results obtained with enhanced integrator!

**For additional information regarding our
high quality minerals and chemicals,
please visit our website:**

www.rtvanderbilt.com

- Technical data sheets
- MSDS information
- Sample requests
- Specifications
- Product brochures
- Articles
- Presentations
- Reports